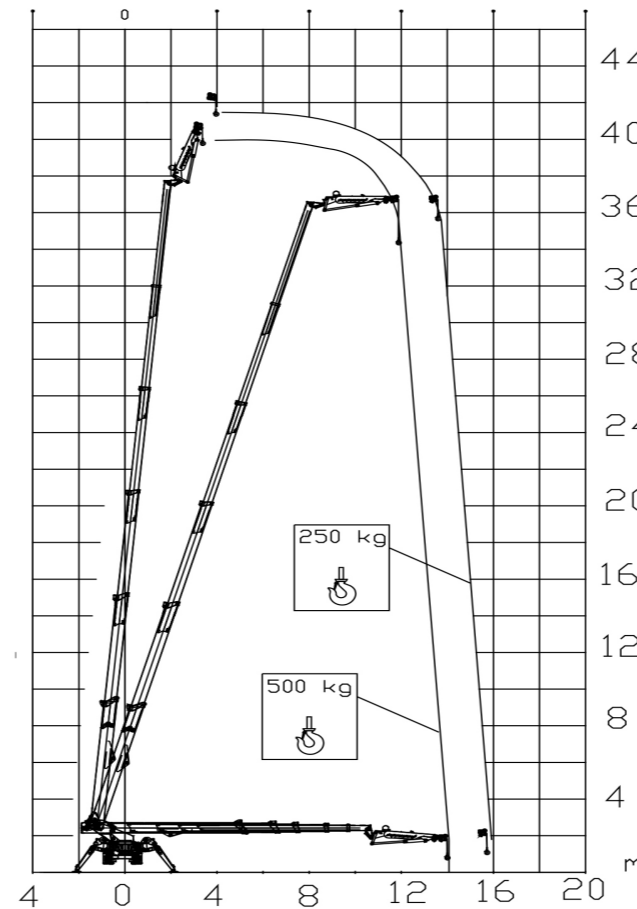
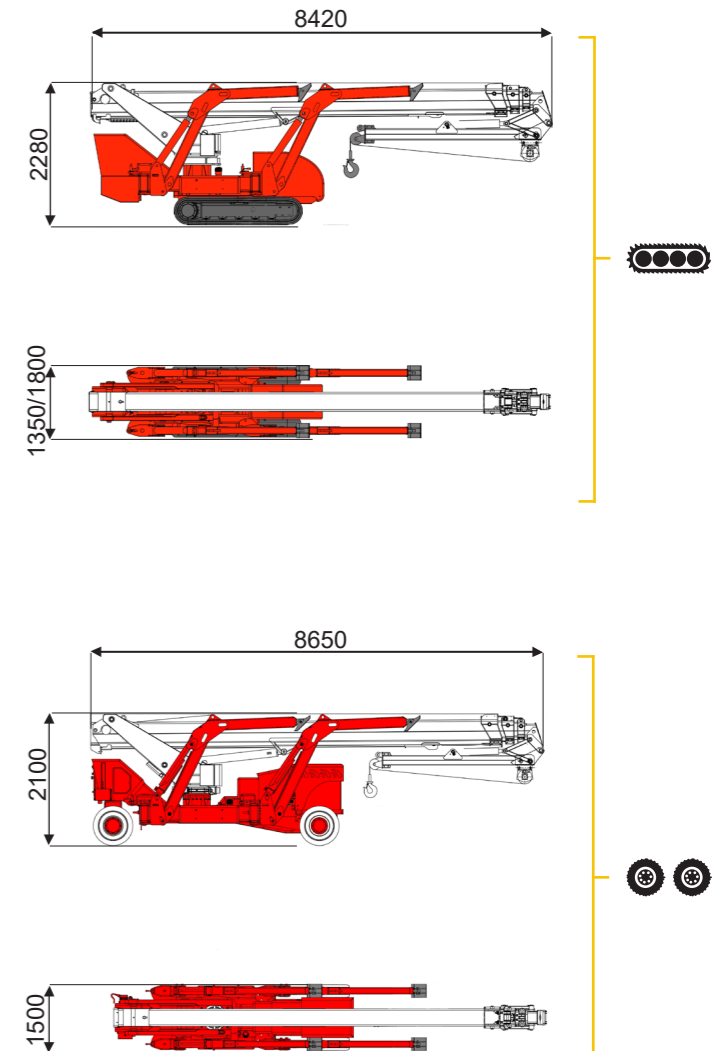




41,7 m ↑
15,2 m →
500 Kg ⚙



13,5 m	15,2 m
500 kg	250 kg



BI-ENERGY
Diesel+AC



XTJ 43+/C



40 m

13,5 m

500 kg

660°

3,64-5,23 m

23%

38%

2,5 km/h

10900 kg

75 kN

3,51 kN/m²

5,39 kN/m²

XTJ 43+/R



41,7 m

15,2 m

500 kg

660°

3,64-5,23 m

23%

16%

1,4 km/h

10900 kg

75 kN

3,51 kN/m²

5,25 kN/m²

Available version:

BI-ENERGY (DIESEL+AC)

ECO (DC+AC)

HYBRID (DIESEL+DC)

Characteristics and technical data are informative only and subjected to change without notice.